

CP-Z2L

Proximity считыватель EM Marine 125Khz

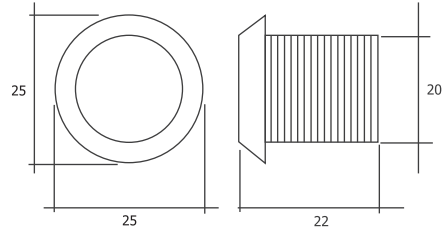


GENERAL INFORMATION

The CP-Z2L is made of mechanically strong and refractory material and completely repeats the shape of the DALLAS key contactor. This allows the CP-Z2L to be installed in ACS products or autonomously, instead of traditional contactors for DALLAS keys without any design changes or installation difficulties. All this will allow to provide users with: Additional service & contactless technology advantages Advantages of contactless door opening (without taking out a key from your pocket or wallet) A wide selection of keys of various shapes and colors, with the possibility to put your logo on. The CP-Z2L reader is used in access control systems as a PROXIMITY contactless transmitter of EM-Marine standard with a working frequency of 125 kHz and conversion of the code of the read card into the code Dallas Touch Memory or Wiegand 26.

CHARACTERISTICS

Operating frequency: 125 KHz
 Work with key fobs: EM Marine
 Range of reading: 3-6 cm
 Light indication: The red LED flashes while the keyfob is being read
 Backlight: The red light * (optional)
 Supply voltage: 8 - 18 VDC
 Current consumption: 50mA (max)
 Operating temperature: -40 C to + 50 C
 Case Material: Polyamide 6
 Output interface: Dallas Touch Memory, Wiegand 26
 Maximum length of the line from the reader to the controller:
 - In DS1990A mode, not more than, 15m
 - in Wiegand mode, not more, 100m Dimension
 (mm): D25 X H22



OPERATION OF THE READER

When the PROXIMITY keyfob is inserted in the field, the identification number is transmitted to the reader. The PROXIMITY code received is converted into a code simulating the Dallas Touch Memory key or a Wiegand 26 signal that is output. When reading the card number and transmitting its code and for 3 seconds, an additional indication lights up.

INSTALLATION AND CONNECTION OF READER CP-Z2L

CThe reader is mounted on a flat surface in a place that provides unobstructed presentation to it PROXIMITY-keychain. To mount the CP-Z2L reader, perform the following operations:
 CMark and drill a hole with a diameter of 20 mm. Insert the reader into the hole and secure it with the fixing nut.
 CConnect the wires to the reader in accordance with Table 1. Apply power to the reader and check operability. Insulate the wires at the connection points.

Table 1. Connection of the CP-Z2L reader.

Color wiring	Conenction by Wiegand26	Touch-Memory Connection	
		Emulation TM	Single transmission of TM code to
White	DATA1	the input of the controller	to the input of the controller
CBBlue	DATA0	-12B ((general ground)	
Black	-12B (general ground)	-12B (general ground)	-12B (general ground)
Red	+12B (Power supply)	+12B (Power supply)	+12B (Power supply)
Brown	Snack "to" turn off "the" permanent "light.		

*To "repeat" the code, connect the white and blue wires together.

CONTENTS OF DELIVERY

Creader CP-Z2L - 1 pcs.
 Nut-1 pc.
 COperating Instructions 1pc

GUARANTEE LIABILITY

The warranty on the CP-Z2L is unlimited.
 Grounds for "termination" of "warranty" obligations:
 · Violation of the present instructions;
 · Presence of "mechanical" damages;
 · Presence of traces of the effects of "aggressive" substances;
 · Presence of "traces" of unqualified "interference" in the "reader"
 During the warranty period, the manufacturer prepares the "faults" of the reader for the "origin" of the manufacturer, or "replaces" the faulted "nodes" and "blocks." Repairing is performed in the workshop of the Manufacturer.

Pulsar-Telecom LLC

CSt. Petersburg, st. Bobruisk, 7, phone / fax. (812) 703-77-65, 542-11-85, 542-04-80
 CMoscow, Schelkovskoye shosse, 2 office. 214, phone / fax. (495) 367-93-40, telephone for connection from Moscow to St. Petersburg (495) 78-77-066
 technical support site <http://control.con.ru> E-mail: control@con.ru

