

## Foreword

Thank you for choosing our pairing modules.

This manual contains all the necessary operating procedures, maintenance information and a description of precautions for beginners. To ensure the high quality of your video intercom, read this manual carefully before connecting. Failure to follow these instructions when installing the module leads to a loss of warranty for it.

## Description

The module of interface of an individual video intercom with a common entrance multi-apartment intercom (hereinafter referred to as the interface module) is intended for connecting an individual video intercom to the communication link of a general intercom with a coordinate system for addressing subscribers (Visits, Numbers, Eltis), for receiving calls from it and opening the access door using standard functions Video intercom.

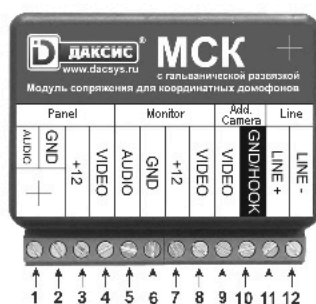
**Compatibility of co-ordinate intercoms of other manufacturers is possible, but not guaranteed.**

In addition to the audio door phone line using the interface module, you can connect a four-wire video calling panel (for installation on the floor) and a video signal from the access camera.

**Attention:** The permissible level of load of the video signal line from the access camera should be clarified by the specialists of the service organization. In the case of insufficient line capacity, an additional floor-mounted video amplifier may be required.

**New opportunity!** For video doorphones equipped with a service signal of the handset position signal (HOOK), starting from version 2d of the interface module boards, there is a scheme for switching off the handset's auto-lift.

## Main technical characteristics of the interface module MSK

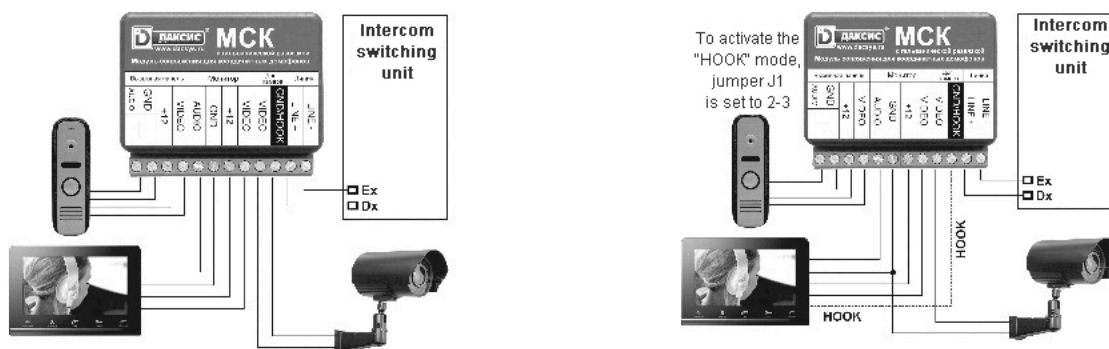


### Pin Assignment:

1. Audio from the calling panel;
2. Common wire of the calling panel;
3. Power supply + 12v for the calling panel;
4. Video signal from the calling panel;
5. Audio signal for video intercom;
6. Common wire of the video intercom;
7. Power supply + 12v from the video intercom;
8. Video signal for video intercom;
9. Video signal from the access camera;
10. Common wire of the access camera / intercom (default state);
11. For the board version starting from 2d, it is possible to connect the HOOK signal in the jumper position J1 2-3;
12. Subscriber line from the door phone (positive contact, dozens);
13. Subscriber line from the door phone (negative contact units);

## Installing the interface module for a video intercom

Connect the interface module to the rest of the equipment, as shown in the diagram. If you plan to use the HOOK signal of your video door, use the connection diagram on the right.



When connecting to the right circuit, do not forget to move jumper J1 to position 2-3, with the purpose of terminal 10 being switched from GND to the HOOK signal input. The common wire of the signal cable of the access video must be connected to any other GND terminal (2 or 6) in this configuration. This connection scheme is only valid for the MSC interface modules version 2d and higher.

**Note:** It is not necessary to connect the calling panel to pins 1-4 of the interface module. You can connect it to a free port of a video intercom or not connect at all.

**Attention:** Do not connect the interface module when the video intercom's power is on.

**Warning:** When connecting, be sure to observe the polarity of the subscriber line of the access intercom. Failure to observe the polarity may result in the inoperability of the subscriber line or the entire common access system.

**Warning:** When setting up the interface module, it is important to correctly set the gain levels of the input and output audio signals of the module. **Incorrectly set levels can lead to insufficient or excessive volume of communication, as well as to the whistling of feedback in the loudspeaker of the video intercom and the panel of the apartment intercom.**

Coordinate modules with galvanic isolation do not require the connection of their common wire to the common wire of the door intercom, because the input circuit of the interface module is not electrically connected to all other circuits. Thus, for an access intercom, the interface module is equivalent to a conventional subscriber handset, which allows the use of a common calling panel for several floor interface modules, by combining their common wires together.

**Warning:** Connection of the access camcorder is not necessary, but in its absence, a call from the intercom will be accompanied by an empty screen. In addition, for some models of a video intercom, the presence of a video signal is mandatory, since in the absence of a video intercom, the door phone resets or does not allow to receive the incoming call. In this case, the video signal from the calling panel can be fed to the "Extra Camera" input (make a jumper between terminals 4 - "VIDEO Call Panel" and 9 - "Extra VIDEO Camera") or from any other standard video camera.

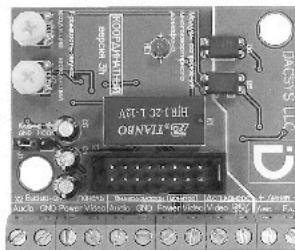
**Warning:** connection of a video signal from an access camera may require galvanic isolation using a video transformer or video amplifier with galvanic isolation of the signal source and amplifier output. In case of difficulties, consult a specialist.

## Configure the interface module

Correctly connected interface module only needs to individually adjust the levels of sound amplification - to achieve a comfortable volume level and eliminate the effect of overload and acoustic feedback (whistle). To do this, pierce the sticker with the screwdriver in the places marked with a plus sign, unscrew the two screws (under the label) and remove the top cover of the case. Adjustments are located inside the case:

Sound volume from the entrance to the apartment (the voice of the guest in the handset) ->

Sound volume from the apartment to the entrance (owner's voice in the intercom) ->



When adjusting, do not use force, the adjusting screw should rotate easily through an angle of about 300 °. It is recommended to use a small screwdriver for rotation. After adjusting the levels, assemble the module back and put it in its intended place.

**Attention:** When assembling, pay attention to the position of the cover - the names of the signals must be on the terminal side.

**Warning:** The full operation of this interface module is guaranteed only with video intercoms that have been tested in our office. Test results are published on our website.

**Attention:** carefully check the color coding of the wires and the names of the signals connected to the interface module! It is better to initially take a sheet of paper and write out there correspondences of colors of wires from the video intercom, calling panel, intercom line and cable from the access camera with the names of the signals connected by these wires. Very often, for identical signals, different colors are used for different devices. Never refer to colors blindly, always check with a pre-compiled table. Remember: once an improperly connected wire can disable both your equipment and the equipment of the entrance intercom! The manufacturer of the interface module, DACISS, reserves the right to modify the circuit, the design of the module and the text of the instruction, without violating the basic functionality and deteriorating the consumer qualities of the product. Changes that expand the functionality of the module are reflected in this manual, available on the company's website in the "Documentation" section. All other modifications are made without further notice..

## Operation of the finished system

After all equipment is installed, properly connected and configured, the complex is ready for operation.

The logic of the interface module means three states: "waiting" (no connection), "connection with the calling panel" (if there was a call from the panel or the "Talk" button or "Browse" button on the video intercom) and "communication with the door intercom" (if there was one call from the door phone). If you used the connection using the HOOK signal, the fourth state "waiting for the handset to be picked up when calling from the intercom" is added (the intercom beeps until the subscriber lifts the handset or until the call stops on the doorphone or after the patience of the intercom expires). Here are the options for possible actions in each of these states:

1. Waiting - you can click the "Browse" button on the video intercom and contact the call panel. You can not contact the access intercom on your own initiative. If your video intercom has a video input for an additional camera or a calling panel - with the help of additional matching / amplifying / decoupling equipment it is possible to connect a video signal from the access camera to it - then you will have the opportunity to look at the yard without a call from below. Contact a specialist for this connection.
  2. Communication with the calling panel - you can open the door with the corresponding button on the video intercom or interrupt communication by raising and lowering the video intercom's handset. For tessellated intercoms, the connection is deactivated by pressing the "Talk" or "Review" button (depends on the logic of the particular video intercom). When working with the calling panel, the LED on the board should not glow.
  3. Communication with the door intercom - in the same way, you can allow the caller to pass through the button "Open" or interrupt the communication in the manner described above. The difference with the previous state is that the picture on the video intercom will be broadcast from the access camera (if it is connected), the conversation is conducted with the subscriber on the porch and the door opening command will be given to the access intercom. When working with an entrance intercom, the LED on the module board should be lit.
  4. Waiting for the handset to be picked up when called from the intercom - when connected using the HOOK signal - a call from the intercom does not lead to immediate communication with the interface module. Instead, the call signal will continue until the connection is established by lifting the video-phone handset (by pressing the "Talk / Talk" button for the non-negotiable models) or until the call terminates after the call time at the intercom. You can pick up the handset (or press the "Talk / Talk" button for the non-trumpet models) to talk with the subscriber or ignore the call to simulate the absence of the host.
- The service output of the HOOK signal is realized for some manufacturers of individual video intercoms sold in our market. The principle of its operation is as follows: while the video door phone is on the base (the "Talk" button was not pressed), the signal is drawn to the common wire (has a low level); When the handset is removed from the base (the conversation initiates by the "Talk / Talk" button), the signal goes to the "broken" or high state. Check the availability of this video intercom signal from your distributor before purchasing a video intercom.

Possible surprises and contingencies:

Any call from the calling panel or from the intercoms the video intercom when it calls the owner and waits for the handset to be picked up (by pressing the "Talk" button). It waits for some time, after which (if the conversation has not started) ends the communication session and goes into a waiting state. If the call was interrupted by a call from the access intercom, the guest interrupted the call, and then immediately started calling again, his call may not be accepted by the video intercom, as he did not have time to go into standby mode. To exit this state, it is enough to put the video intercom in a waiting state or wait until it makes it yourself.

Different models of video intercoms differently work out the call from the intercom - some signal for a long time and it's hard not to notice them, while others - issue one or two "ding-dong" and fall silent. In any case, if the video intercom does not have a HOOK signal output, the connection to the door intercom is installed immediately and the last one appears "Speak". This is a feature of the operation of any external interface module, which has no information from the video intercom about the fact of lifting the handset and is forced to "lift" it immediately.

These and other features of the operation of video intercoms, the compatibility table and the "black list" of video intercoms can be found on our website. You can render us and other customers of our products invaluable help by sharing your experience of using the interface module with different types of access doorphones and personal video intercoms not yet listed in the compatibility list on our website.

We wish you only pleasant sensations from the quality of our products!

The requisites of the manufacturer:

LLC "DAKSIS" INN 7723813057

Address: 115088, Moscow, Yuzhnoportovaya str., house 7, room 15

Phone +7 (499) 999-0168 (multichannel), +7 (926) 217-5772

Working hours: from 10.00 to 17.30, closed Saturday and Sunday.

Website: [www.dacsys.ru](http://www.dacsys.ru)